

# ARMERA<sup>®</sup>

## Installation Instructions

Pneumatic concealed cistern

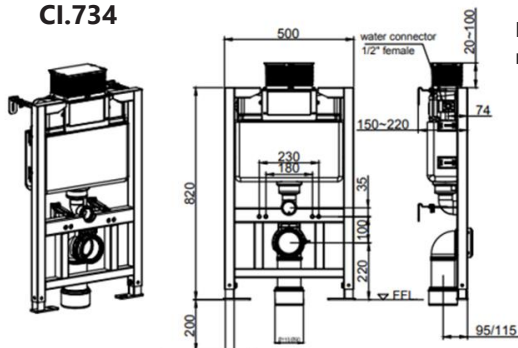
CI.734 & CI.733



# Installation Instructions

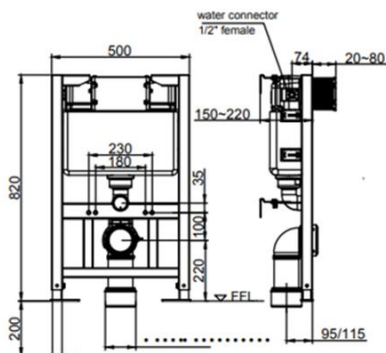
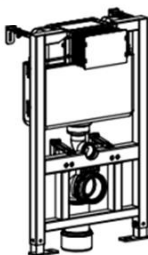
1. The flush plate can be mounted at the front of the frame OR on top of the frame. Set out installation depth into cavity wall using below dimensions (all dimensions in mm):

## CI.734

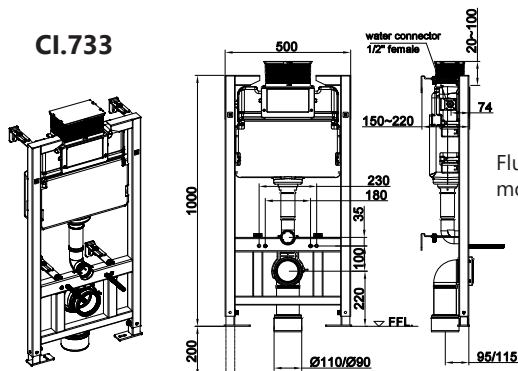


Flush plate mounted on top

Flush plate mounted on front

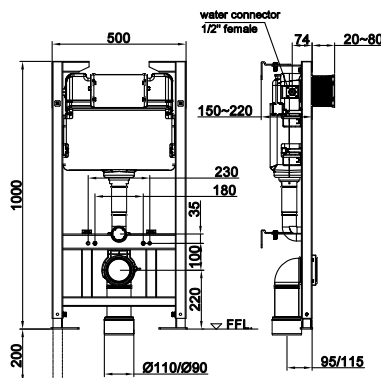
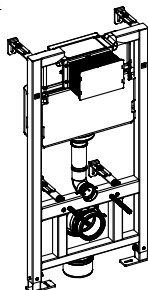


## CI.733



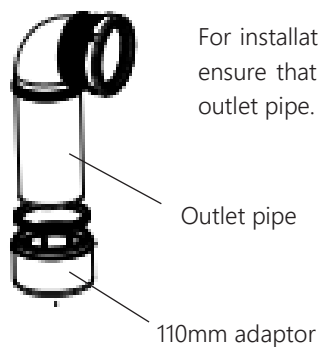
Flush plate mounted on top

Flush plate mounted on front



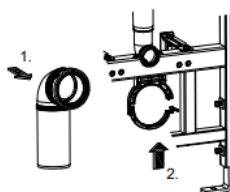
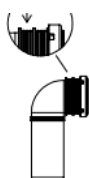
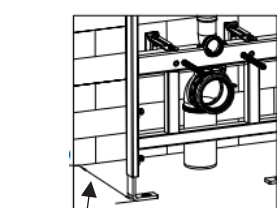
Duct mounted as front flush

## 2. Install the outlet pipe

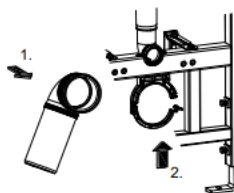
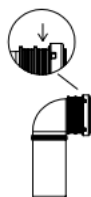
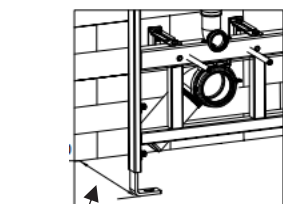


For installation compatibility with UK pipework please ensure that the 110mm outlet adaptor is fitted to the outlet pipe.

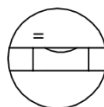
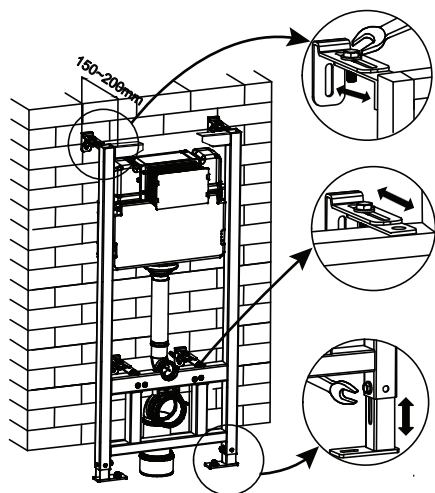
If outlet pipe runs straight down, please allow min. 150mm installation depth.



If outlet pipe is offset, please allow min 170mm installation depth.



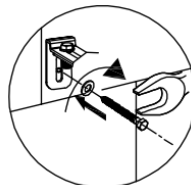
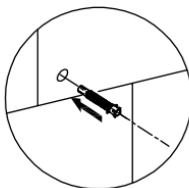
- Offer the frame up to the wall or studwork onto which it will be attached. Use a spirit level to ensure it is level. Adjustments can be made on each of the 4 wall brackets. The height of the frame can be altered by sliding the feet in or out of the frame.



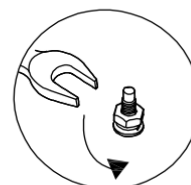
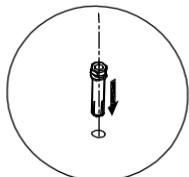
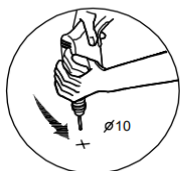
When you are satisfied that the frame is in the correct position and is level, mark the fixing points on the wall and the floor.

- Fix the frame firmly in position using the floor and wall bolts provided. Please note, these bolts may not be suitable for all installations. Please check suitability before drilling any holes.

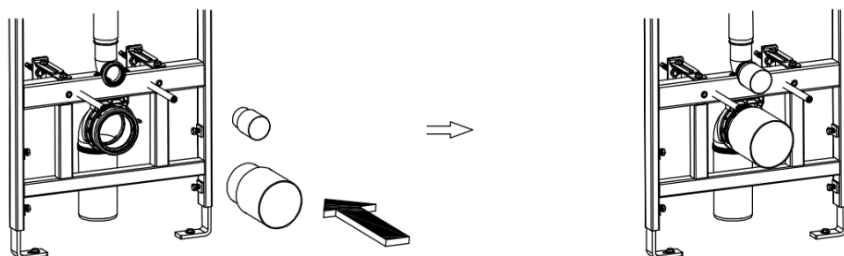
Wall:



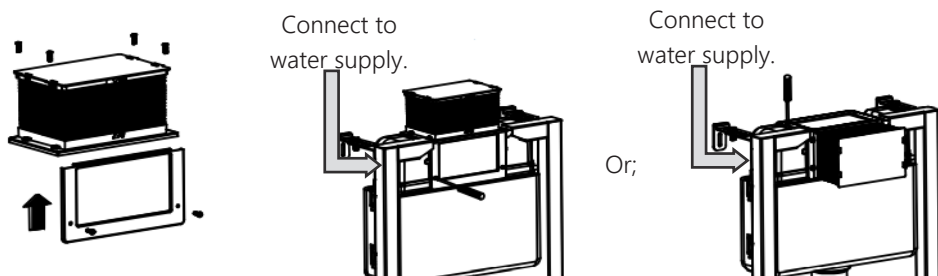
Floor:



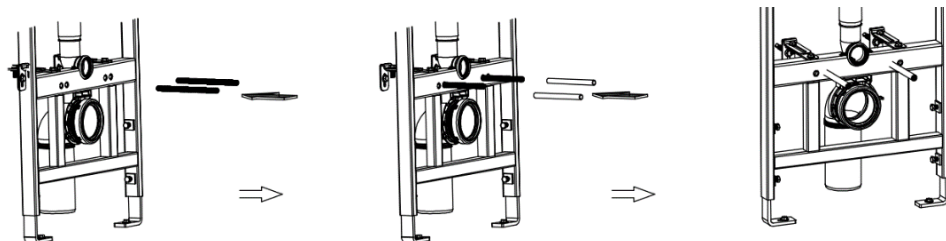
5. Install the outlet cap and the flush cap. This will protect the open pipework from dirt and debris during the rest of the installation.



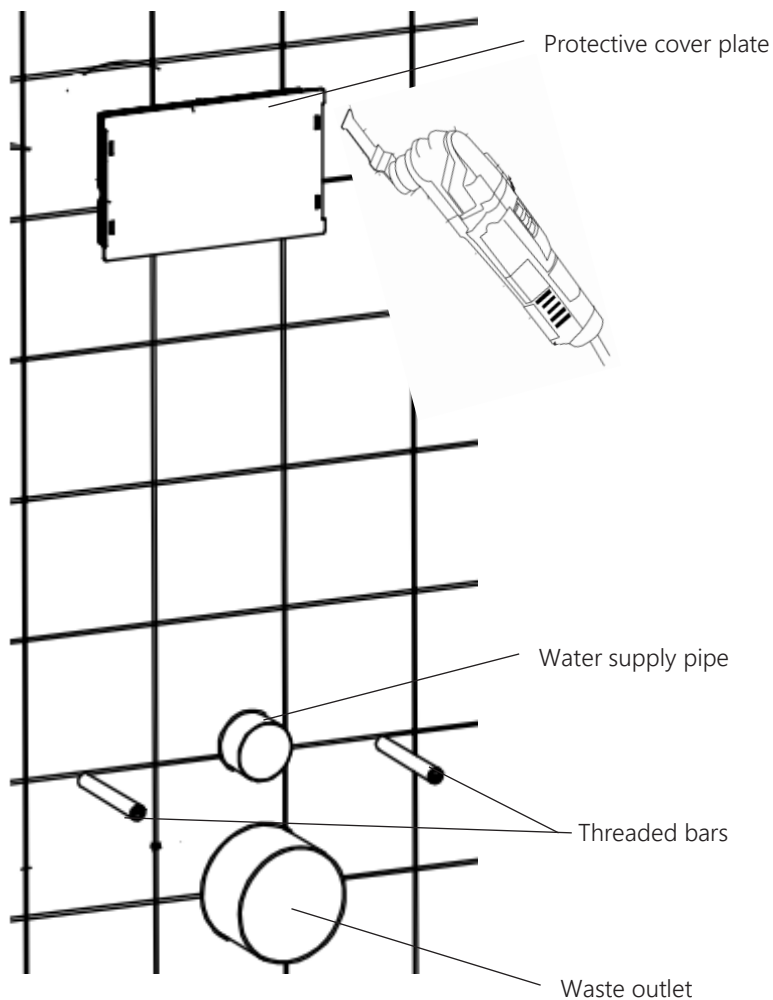
6. Install the protective cover plate (choose either top mounting or front mounting). Ensure water supply is isolated and connect the cistern to the water supply. Please ensure water supply has been completely flushed to remove any dirt and debris before connection is made.



7. Attach the threaded bars from the WC mounting kit. Check to ensure that the width at which the bars are set match the fixing points in the WC that is to be installed. Cover the bars with the protective plastic sleeve to prevent damage occurring.

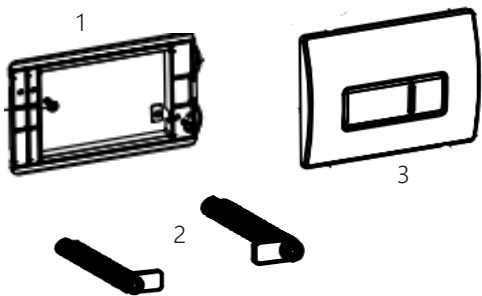


8. Build the finished wall, allowing the protective cover plate, threaded bars, water supply pipe and waste outlet to protrude through the wall. Tile or decorate up to the protective cover and then use a cutting tool to cut the rim of the cover so that it is completely flush with the finished wall.



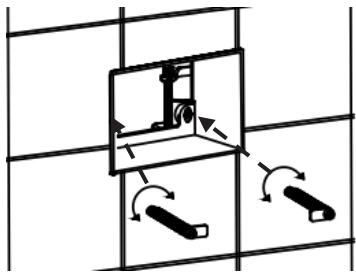
Fixing the flush plate:

\*Please note: Flush plate is sold separately. Your chosen Armera flush plate will include:

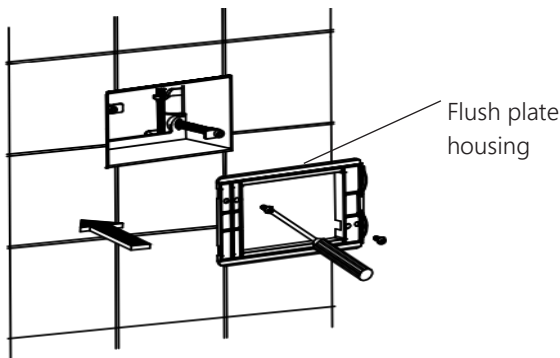


Item	Description
1	Flush plate housing
2	Flush plate fixings (x2)
3	Flush plate

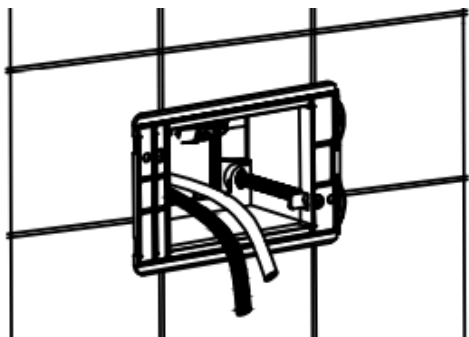
1. Push in the flush plate fixings and twist them to lock into position. Flush plate fixings can be cut down before they are installed if necessary.



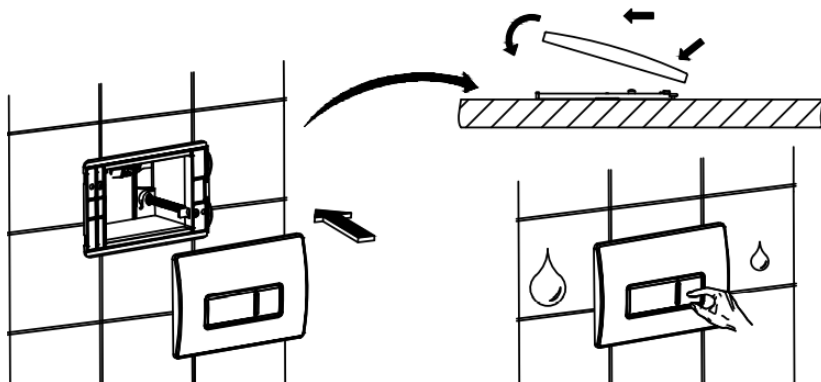
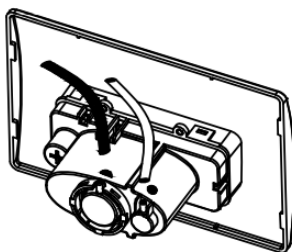
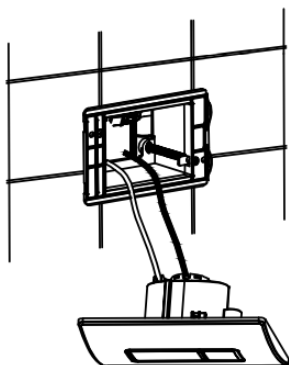
2. Attach the flush plate housing to the flush plate fixings.



3. Pull the air hoses through the flush plate housing.



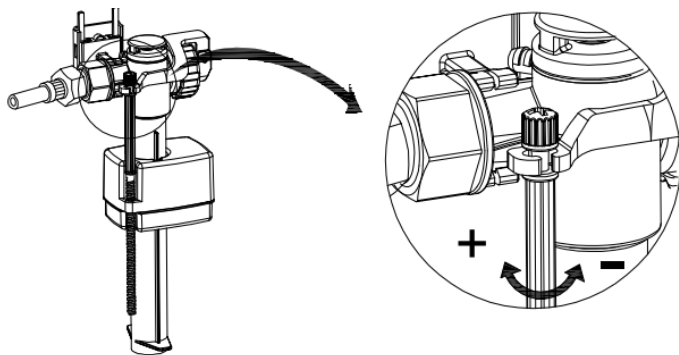
4. Attach the air hoses to the flush plate and fix the flush plate into position.



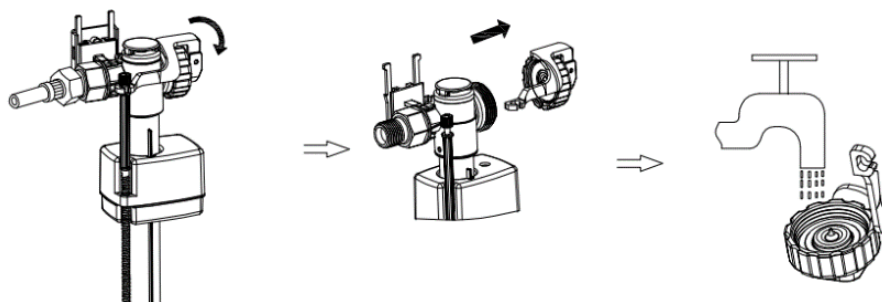


## Maintenance

1. The water level in the cistern can be adjusted by accessing the fill valve inside the cistern. Turning the adjuster clockwise will increase the amount of water held in the cistern. Turning anti-clockwise will decrease the amount of water.

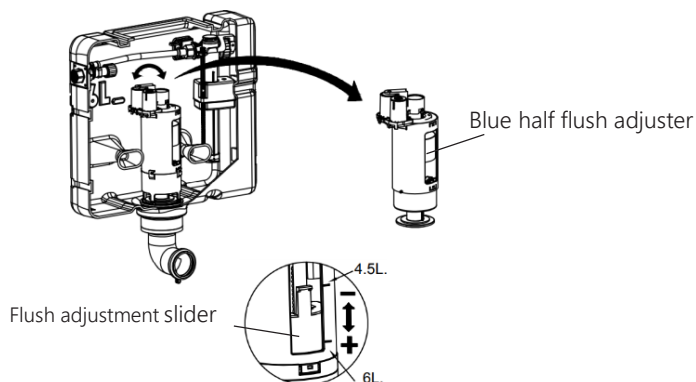


2. If the cistern becomes slow to fill or does not stop filling, the fill valve can be removed and cleaned.



To remove the flush valve:

1. Remove flush plate and disconnect the air hoses.
2. Reach into the cistern and twist the flush valve whilst pulling upwards to remove it.
3. The volume of full flush can be adjusted by moving the flush adjustment slider up to decrease volume or down to increase volume. The volume of half flush can be adjusted by twisting the blue flush adjuster and sliding it up to decrease the volume and down to increase it. Once desired volume is achieved, the blue flush adjuster should then be twisted back into the locked position.



## Contact us:

Should you need any assistance, please email us at [info@armera.co.uk](mailto:info@armera.co.uk) or call 01225 251204

## Caring for your Armera product

We recommend only cleaning your product with a soft damp cloth. Please do not use any other cleaning products as they may damage the high quality finish of this product.

## Guarantee

This Armera product is guaranteed against manufacturing defects. The cover period is from date of supply to the Armera customer and will last for 2 years for parts and labour. The parts guarantee can be extended to 5 years by registering your guarantee. To register your guarantee and review all guarantee conditions, please go to [www.armera.co.uk](http://www.armera.co.uk)

