

# ARMERA®

## Installation Instructions

### Slimline concealed cistern



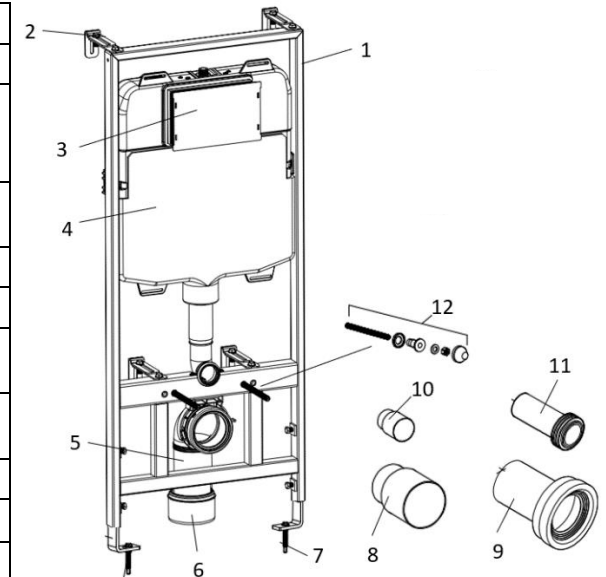
### Please note

Please follow all instructions carefully. Failure to do so could invalidate your guarantee. As with the installation of any water bearing product, you must make sure that any laws prevalent to your area are followed. Such laws may include Local & National Water Supply Authority Regulations or Byelaws and Building and Plumbing Regulations. We recommend that a qualified registered plumber is used to install your product. Please ensure that when fitted, the product is easily accessed for service and maintenance requirements. Armera cannot be held liable for costs associated with accessing the product after it is fitted.

### Before starting installation

Please remove all packaging and make sure no components are missing. The following components should be present:

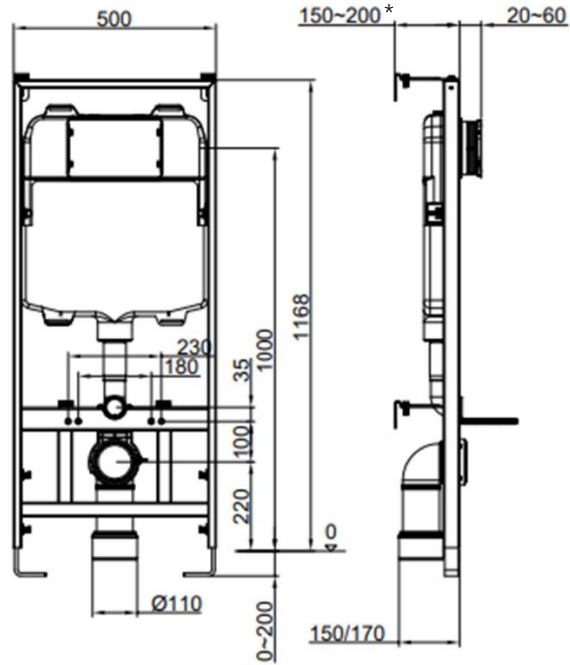
Item	Description
1	Frame
2	Wall brackets, fixing screws, washers & bolts (x4)
3	Protective cover plate
4	Cistern
5	Outlet pipe
6	110mm Outlet pipe adaptor
7	Floor mounting bolts (x2)
8	Outlet cap
9	Pan connector
10	Flush cap
11	Flush pipe
12	WC mounting kit (x2)



Before installation, please ensure that the plumbing system has been fully flushed to remove dirt and debris.

## Installation Instructions

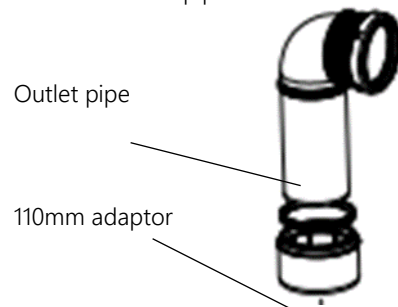
1. Set out installation depth into cavity wall using below dimensions (all dimensions in mm):



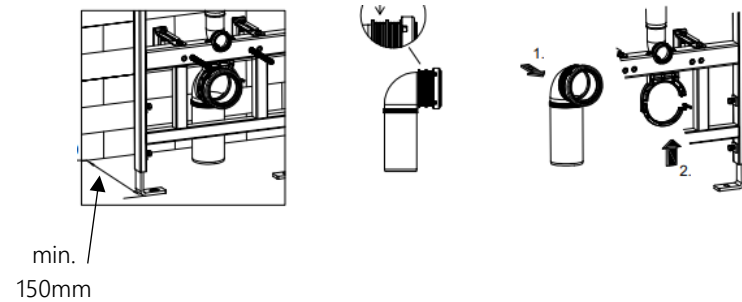
\*NB If outlet pipe runs directly into the wall a minimum depth of 110 can be achieved by attaching the angled bracket directly to the frame:



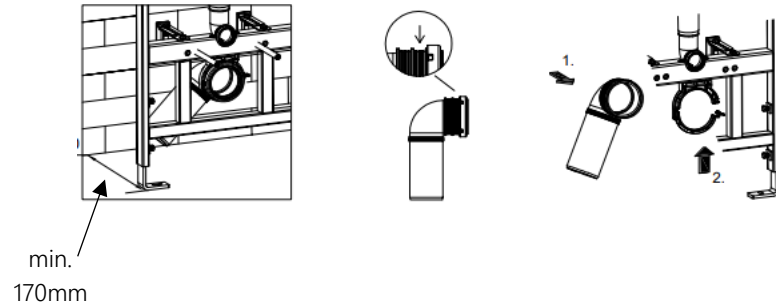
2. Install the outlet pipe. For installation compatibility with UK pipework please ensure that the 110mm outlet adaptor is fitted to the outlet pipe.



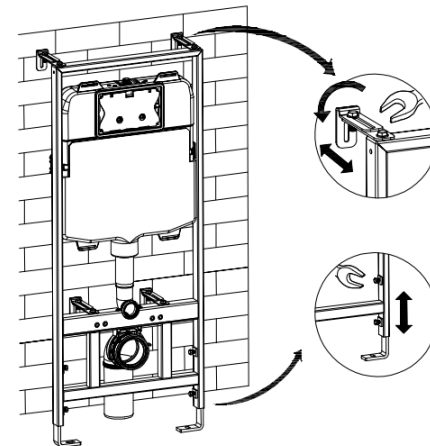
If outlet pipe runs straight down, please allow min. 150mm installation depth.



If outlet pipe is offset, please allow min 170mm installation depth.



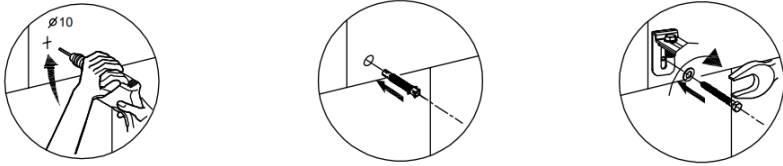
3. Offer the frame up to the wall or studwork onto which it will be attached. Use a spirit level to ensure it is level. Adjustments can be made on each of the 4 wall brackets. The height of the frame can be altered by sliding the feet in or out of the frame.



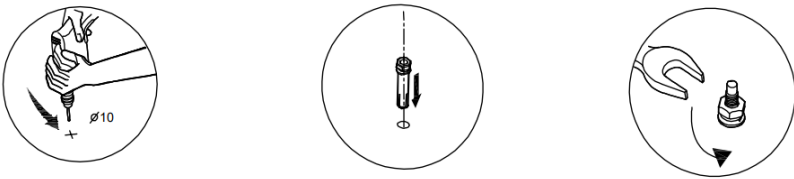
When you are satisfied that the frame is in the correct position and is level, mark the fixing points on the wall and the floor.

- Fix the frame firmly in position using the floor and wall bolts provided. Please note, these bolts may not be suitable for all installations. Please check suitability before drilling any holes.

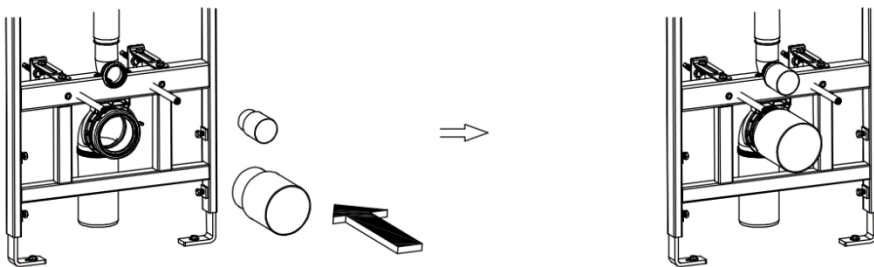
Wall:



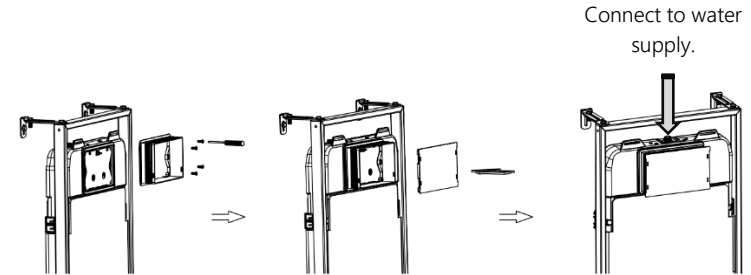
Floor:



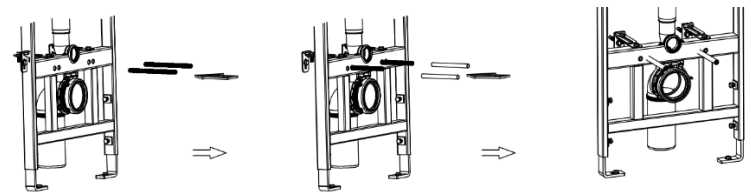
- Install the outlet cap and the flush cap. This will protect the open pipework from dirt and debris during the rest of the installation.



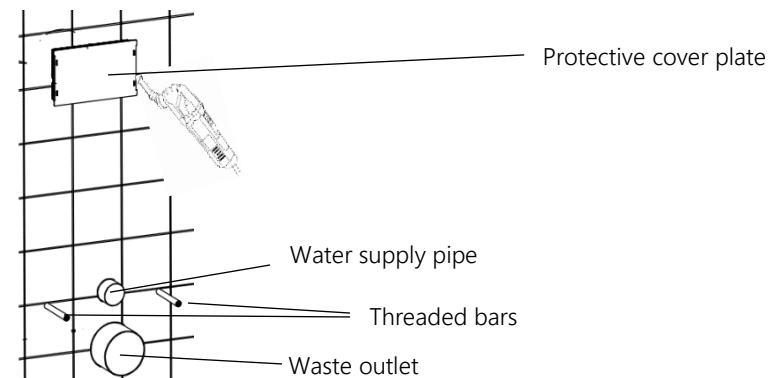
- Install the protective cover plate. Ensure water supply is isolated and connect the cistern to the water supply. Please ensure water supply has been completely flushed to remove any dirt and debris before connection is made.



- Attach the threaded bars from the WC mounting kit. Check to ensure that the width at which the bars are set match the fixing points in the WC that is to be installed. Cover the bars with the protective plastic sleeve to prevent damage occurring.

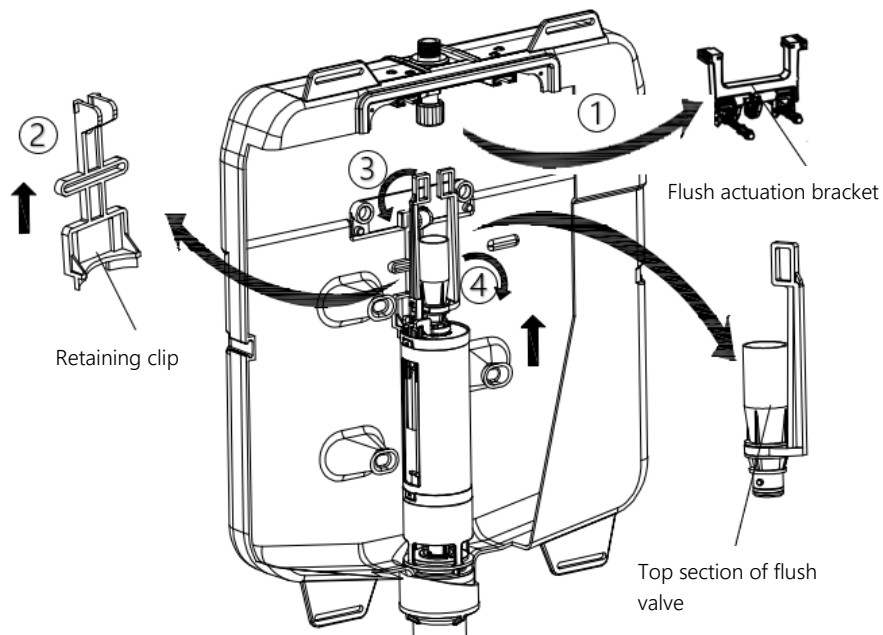


- Build the finished wall, allowing the protective cover plate, threaded bars, water supply pipe and waste outlet to protrude through the wall. Tile or decorate up to the protective cover and then use a cutting tool to cut the rim of the cover so that it is completely flush with the finished wall.

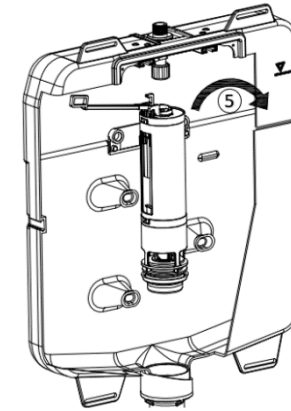


To remove the flush valve:

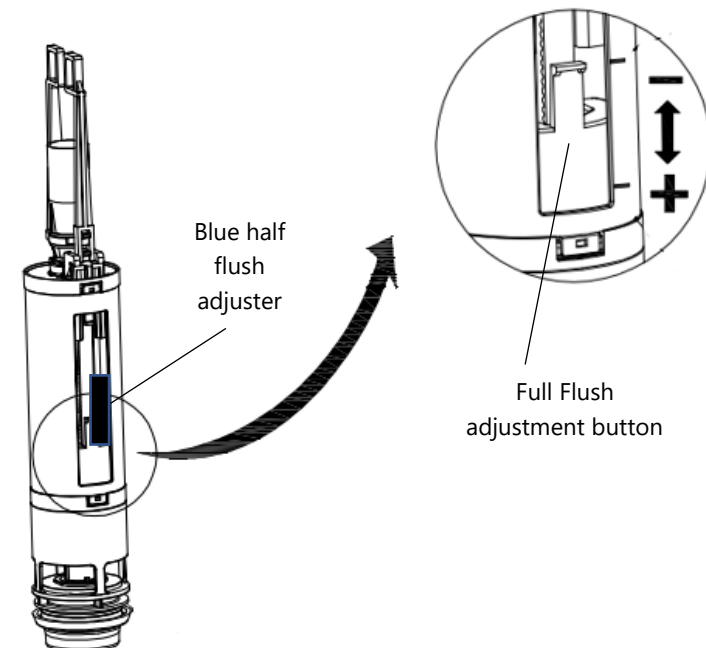
1. Open front cover of the cistern and remove the flush actuation bracket.
2. Remove the retaining clip at the back of the cistern by pinching the top lugs together and pulling the entire clip upwards to remove it from the cistern.
3. Pull the white flush actuator down to the left.
4. Twist the top section of the flush valve anti-clockwise and lift upwards to remove it from the cistern.



5. The main body of the flush valve can then be removed from the cistern.

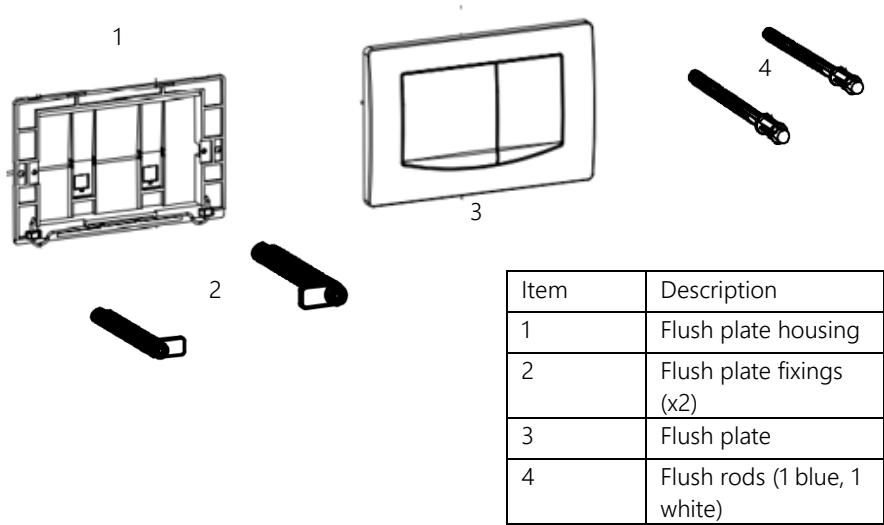


6. The volume of full flush can be adjusted by moving the flush adjustment slider up to decrease volume or down to increase volume. The volume of half flush can be adjusted by twisting the blue flush adjuster and sliding it up to decrease the volume and down to increase it. Once desired volume is achieved, the blue flush adjuster should then be twisted back into the locked position.

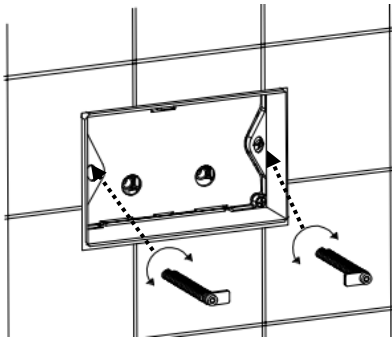


Fitting the flush plate:

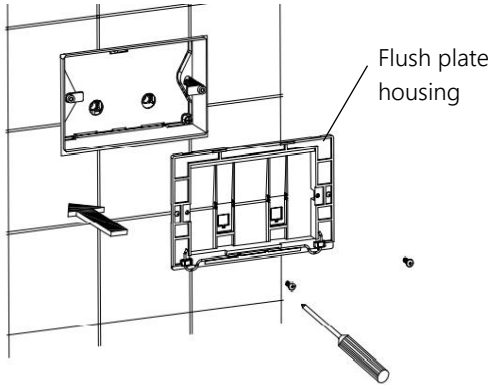
\*Please note: the flush plate is sold separately. Your chosen Armera flush plate will include:



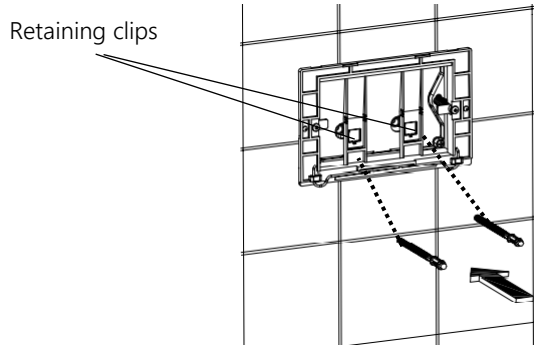
1. Push the flush plate fixings into the flush plate housing and twist them to lock into position. Flush plate fixings can be cut down before they are installed if necessary.



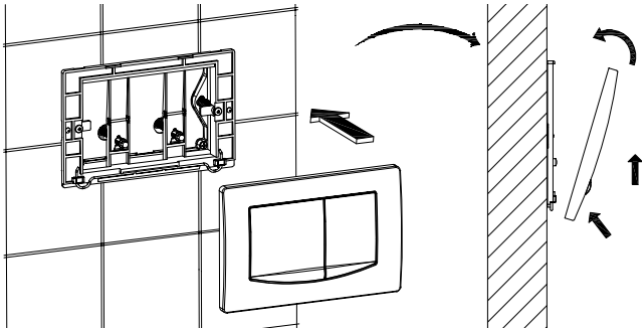
2. Attach the flush plate housing to the flush plate fixings.



3. Remove the retaining clips (parts marked with the word "Front") from the flush plate housing then screw the blue and white flush rods into the flush mechanism. Please note, the flush rods can be cut down before installation if necessary. Finally, replace the retaining clips to secure the flush rods in position.

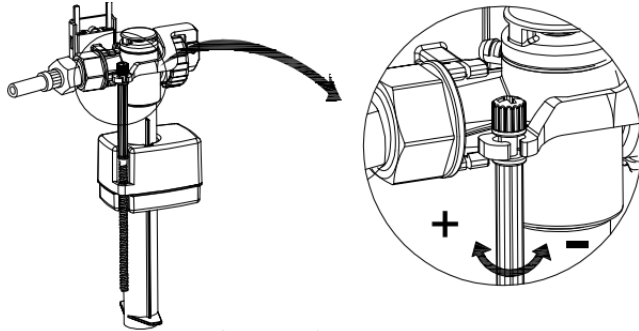


4. Fix the flush plate into position.

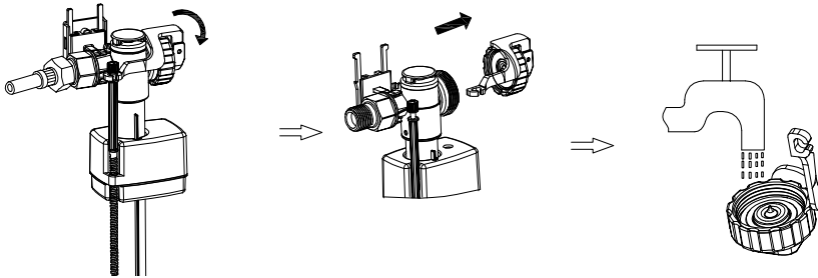


## Maintenance

1. The water level in the cistern can be adjusted by accessing the fill valve inside the cistern. Turning the adjuster clockwise will increase the amount of water held in the cistern. Turning anti-clockwise will decrease the amount of water.



2. If the cistern becomes slow to fill or does not stop filling, the fill valve can be removed and cleaned.



## Contact us:

Should you need any assistance, please email us at [info@armera.co.uk](mailto:info@armera.co.uk) or call 01225 251204

## Caring for your Armera product

We recommend only cleaning your product with a soft damp cloth. Please do not use any other cleaning products as they may damage the high quality finish of this product.

## Guarantee

This Armera product is guaranteed against manufacturing defects. The cover period is from date of supply to the Armera customer and will last for 2 years for parts and labour. The parts guarantee can be extended to 5 years by registering your guarantee. To register your guarantee and review all guarantee conditions, please go to [www.armera.co.uk](http://www.armera.co.uk)

