

ARMERA

Installation Instructions

Atoll | Opa

Furniture



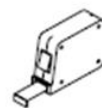
Please note

Please follow all instructions carefully. Failure to do so could invalidate your guarantee. Please ensure that when fitted, the product is easily accessed for service and maintenance requirements. Armera cannot be held liable for costs associated with accessing the product after it is fitted.

Before starting installation

Whilst these products are made to a high quality, please take every care when handling them to avoid surface damage.

Please remove all packaging and make sure no components are missing. You will need the following tools:



Tape measure



Spirit Level



Safety Glasses



drill & bits



Screwdriver



Silicone

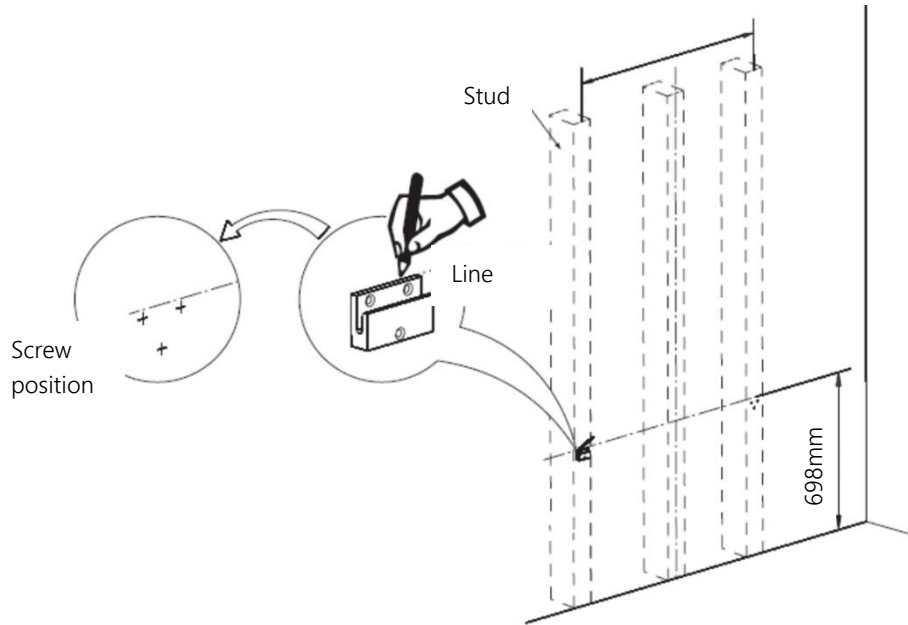


Pencil

Installation

Before drilling any holes, please make sure you are aware of the location of electric wires and other pipes that may sit in or behind the wall.

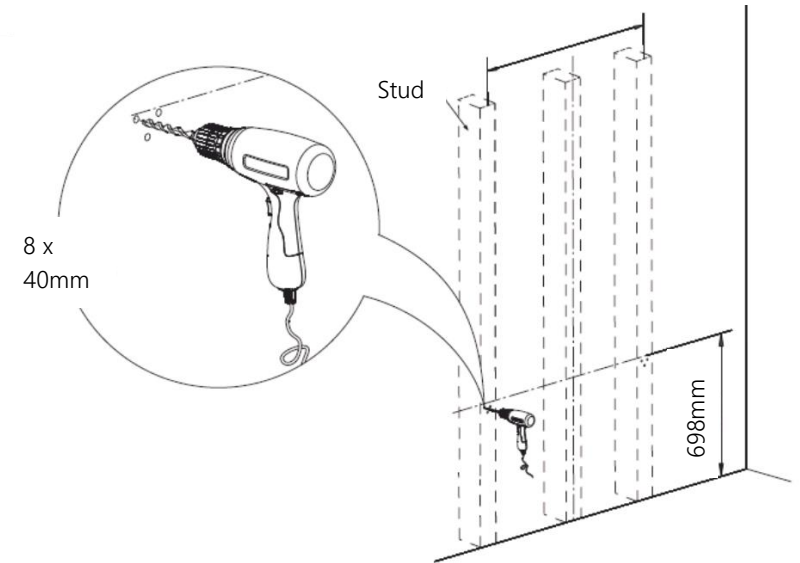
Fitted to the rear of the unit are x 2 fixing brackets. Measure the distance between the two brackets and mark this distance on the wall, ensuring it is horizontally aligned, using a spirit level:



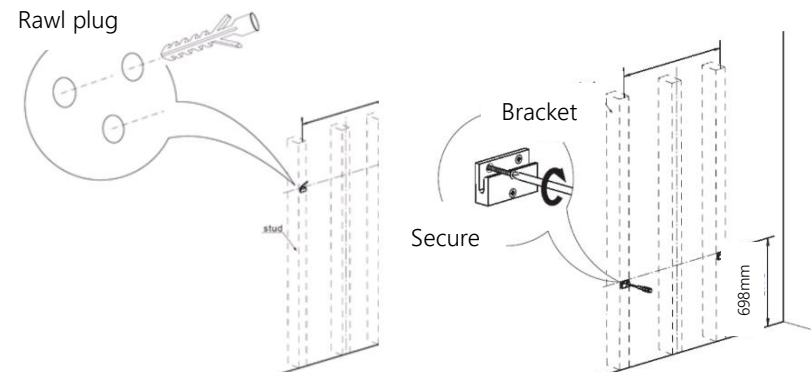
Please decide desired height of basin unit and mark out bracket position accordingly.

It is recommended to install to a solid wall, but if fitting to a stud wall, the fixings must be secured into a stud, not only into the plasterboard.

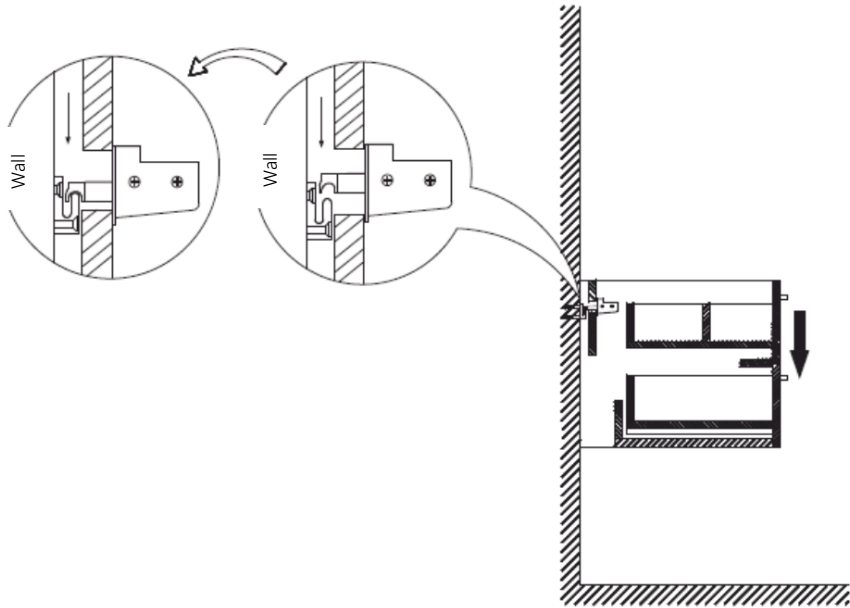
After the position of the brackets is marked, drill the holes in the wall, using an 8mm drill bit (not supplied), to a depth of approx. 40mm.



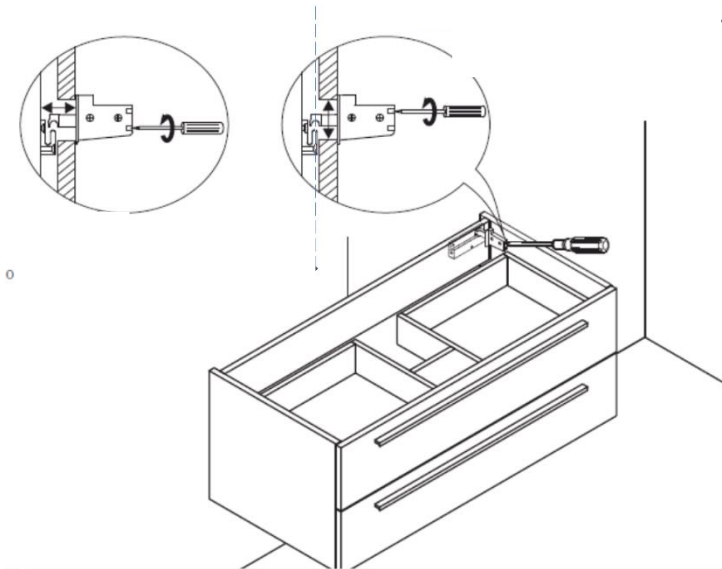
Insert the rawl plugs and tap flush with the wall surface and secure the wall brackets into place.



Check the brackets fitted to the unit are fully tightened, then lift the unit onto the wall fitted brackets.

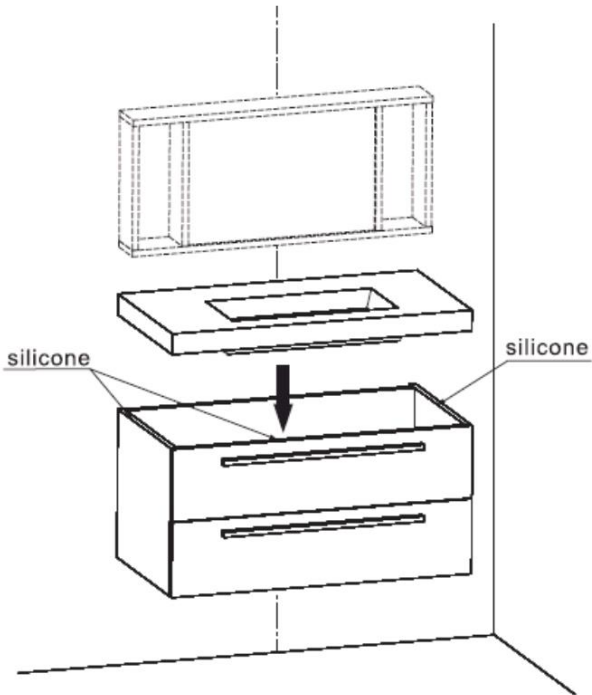


If any adjustment forward, backward, up, or down is required this is possible via the fitted adjusters on the inside of the unit.



After any adjustment of the unit has been made, the basin can be fitted to the unit, by applying a bead of silicone between the unit and basin to provide a seal

Also run a bead of silicone along the back edge of the base where it meets the wall.



Contact us:

Should you need any assistance, please email us at info@armera.co.uk or call 01225 251204

Guarantee

This Armera product is guaranteed against manufacturing defects. The cover period is from date of supply to the Armera customer and will last for 2 years for parts and labour. The parts guarantee can be extended to 10 years by registering your guarantee. To register your guarantee and review all guarantee conditions, please go to www.armera.co.uk

